

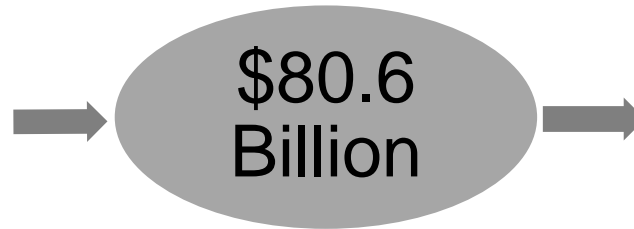
# Local Control Funding Formula (LCFF) Statewide Fingertip Facts 2023–24 Fiscal Year – First Principal Apportionment (as of February 2024)

Prepared by: CA Dept. of Education  
School Fiscal Services Division

## 2023–24 AT A GLANCE

### Funding Sources:

- \$41.2 Billion from State General Fund
- \$25.5 Billion from Local Revenue
- \$13.9 Billion from Education Protection Account (EPA)



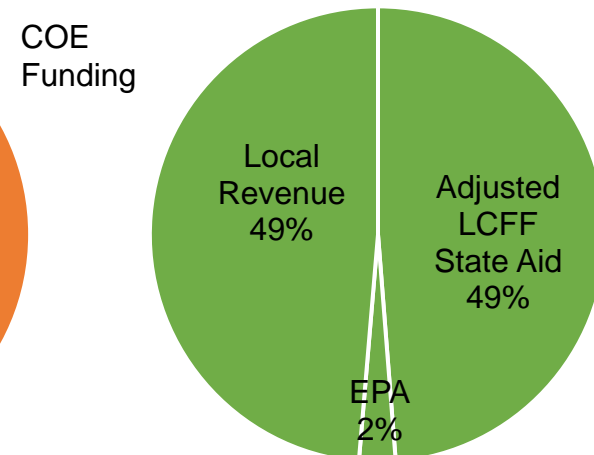
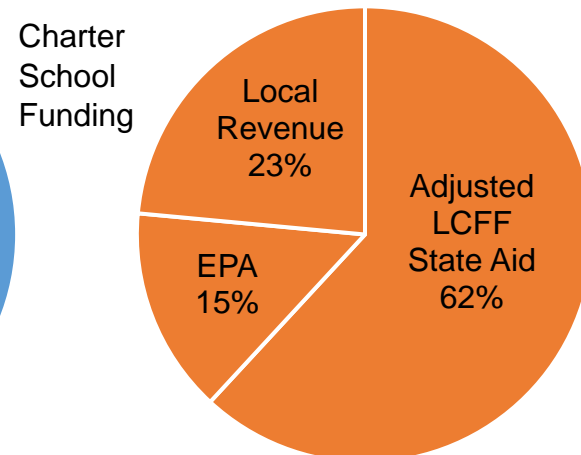
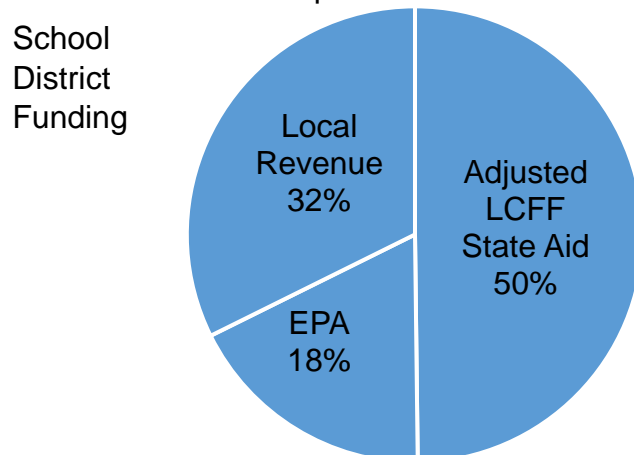
### Funding Apportioned:

- \$70.0 Billion to School Districts
- \$9.1 Billion to Charter Schools
- \$1.5 Billion to County Offices of Education (COE)

## LCFF Funding Detail

Sources	School Districts	Charter Schools	School District & Charter Subtotal	County Offices of Education	Statewide Total
LCFF State Aid before Minimum State Aid (MSA)	\$34,701,752,117	\$5,611,774,556	\$40,313,526,673	\$451,565,826	<b>\$40,765,092,499</b>
Additional State Aid for MSA Guarantee, Other LCFF State Aid for COEs	189,430,689	323,336	189,754,025	269,944,181	<b>459,698,206</b>
Adjusted LCFF State Aid (subtotal)	34,891,182,806	5,612,097,892	40,503,280,698	721,510,007	<b>41,224,790,705</b>
EPA State Aid	12,517,160,598	1,324,533,160	13,841,693,758	38,261,192	<b>13,879,954,950</b>
Local Revenue/In-lieu of Property Taxes <sup>1</sup>	22,642,737,761	2,133,073,477	24,775,811,238	720,042,951	<b>25,495,854,189</b>
<b>Total LCFF Funding Sources</b>	<b>\$70,051,081,165</b>	<b>\$9,069,704,529</b>	<b>\$79,120,785,694</b>	<b>\$1,479,814,150</b>	<b>\$80,600,599,844</b>

<sup>1</sup>Amounts in table and pie charts do not include excess local revenue.



## SCHOOL DISTRICT AND CHARTER SCHOOL DATA

### Summary

LCFF Entitlement Component	District Count	% of Districts	District Funding	Charter Count	% of Charters	Charter Funding	Total Count	Total Funding
Base Grant Funding <sup>2</sup>	902	96.2%	\$55,356,414,737	1,261	100.0%	\$7,495,772,726	2,164	\$62,852,187,463
Supplemental Grant Funding	938	100.0%	7,102,650,417	1,261	100.0%	938,196,933	2,200	8,040,847,350
Concentration Grant Funding	571	60.9%	5,451,139,307	785	62.3%	588,634,243	1,357	6,039,773,550
Add-on Funding	109	11.6%	144,656,859	n/a	n/a	n/a	110	144,656,859
Miscellaneous Adjustments <sup>3</sup>	934	99.6%	1,752,726,034	654	51.9%	46,777,291	1588	1,799,503,325
Miscellaneous Adjustments	0	0.0%	0	0	0.0%	0	1	0
State Aid for MSA Guarantee	150	16.0%	189,430,689	8	0.6%	323,336	159	189,754,025
<b>Total LCFF Entitlement<sup>4</sup></b>	<b>n/a</b>	<b>n/a</b>	<b>\$69,997,018,043</b>	<b>n/a</b>	<b>n/a</b>	<b>\$9,069,704,529</b>	<b>n/a</b>	<b>\$79,066,722,572</b>

<sup>2</sup>Some school districts are fully funded through NSS and do not receive Base Grant Funding; some charter schools have no Base Grant Funding due to zero funded ADA.

<sup>3</sup> Adjustments for special legislation, instructional time penalties, and class size penalties.

<sup>4</sup>Total LCFF Entitlement is less than Total LCFF Funding Sources (shown on page 1) due to EPA State Aid minimum guarantee.

### Ten Largest School Districts (based on Funded ADA)

School District Name	ADA	UPP
Los Angeles Unified	375,014.79	85.67%
San Diego Unified	91,575.79	59.47%
Fresno Unified	64,859.13	88.46%
Long Beach Unified	63,768.18	64.13%
Elk Grove Unified	59,071.46	51.76%
Corona-Norco Unified	49,097.20	69.75%
San Francisco Unified	47,267.96	59.66%
San Bernardino City Unified	43,837.32	91.52%
Capistrano Unified	41,768.48	32.79%
Clovis Unified	40,588.23	48.33%

### Ten Largest Charter Schools (based on Funded ADA)

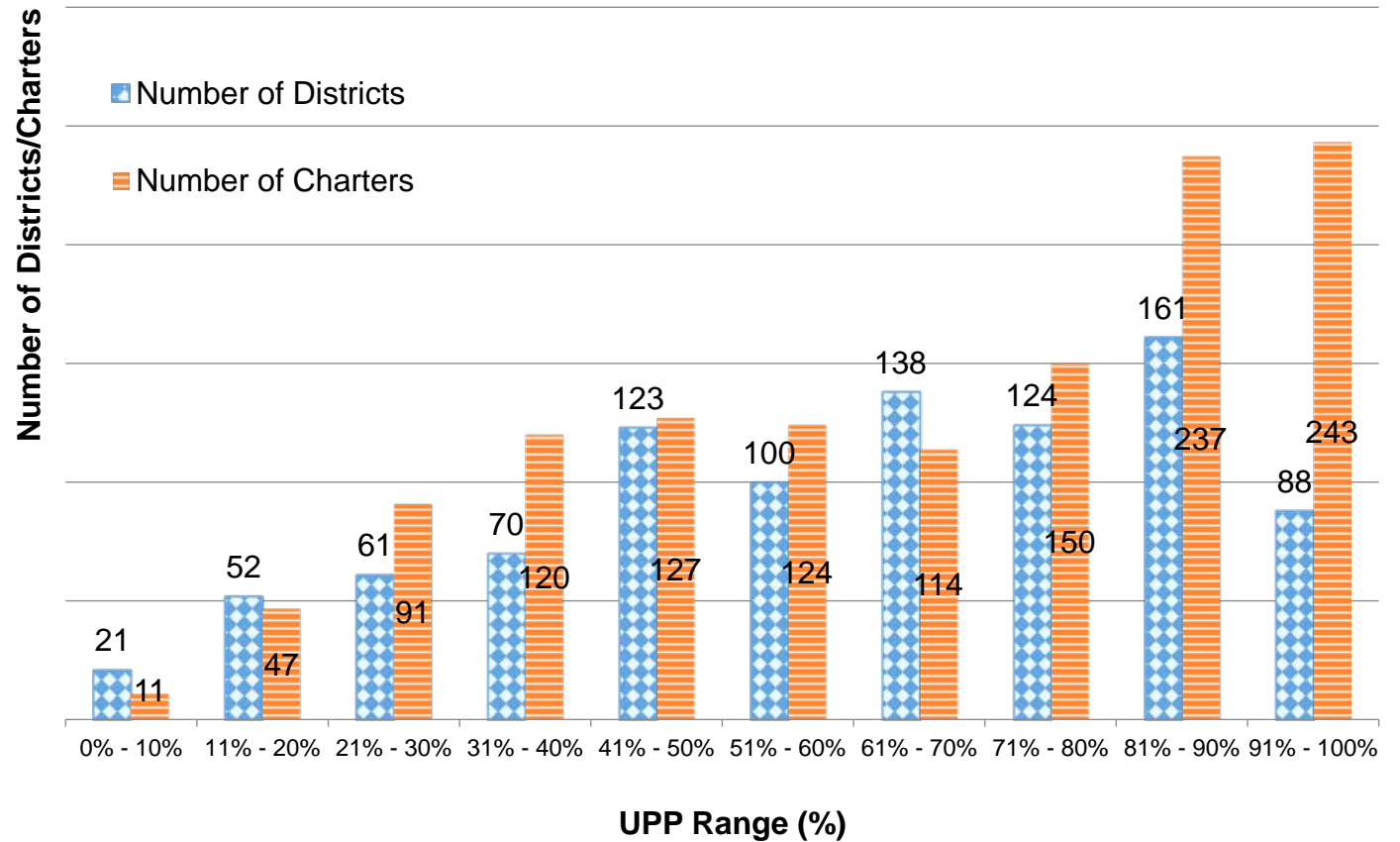
Charter School Name	ADA	UPP
River Springs Charter	7,291.86	58.43%
Blue Ridge Academy	6,925.63	41.69%
Visions In Education	6,698.69	56.02%
Granada Hills Charter	5,760.86	50.75%
Mission Vista Academy	5,642.96	42.61%
Highlands Community Charter	5,583.60	99.13%
Pacific Coast Academy	5,528.75	38.79%
California Virtual Academy @ Los Angeles	5,437.54	73.38%
Heartland Charter	5,215.40	43.88%
California Connections Academy Southern California	4,921.61	52.38%

## Total Funded ADA by Grade Span (includes NSS ADA)

LEA Type	Number of LEAs	Grades TK/K-3	Grades 4-6	Grades 7-8	Grades 9-12	TOTAL ADA
School Districts	938	1,497,559.62	1,132,296.06	760,772.46	1,603,771.97	4,994,400.11
Charter Schools	1,264	185,458.49	138,604.35	109,215.42	238,255.32	671,533.58
<b>TOTAL</b>	<b>2,202</b>	<b>1,683,018.11</b>	<b>1,270,900.41</b>	<b>869,987.88</b>	<b>1,842,027.29</b>	<b>5,665,933.69</b>

## Unduplicated Pupil Percentage (UPP) Ranges for School Districts and Charter Schools

UPP Range	District Count	Charter Count
0% - 10%	21	11
11% - 20%	52	47
21% - 30%	61	91
31% - 40%	70	120
41% - 50%	123	127
51% - 60%	100	124
61% - 70%	138	114
71% - 80%	124	150
81% - 90%	161	237
91% - 100%	88	243
<b>Total</b>	<b>938</b>	<b>1,264</b>



## COUNTY OFFICE OF EDUCATION DATA

### LCFF Funding Summary

LCFF Entitlement	Number of COEs	Amount
Funding Based on LCFF Target <sup>5</sup>	47	\$804,482,110
Funding Based on “Hold Harmless” provisions of <i>EC</i> Section 2575(g)(2)	11	\$404,657,115

<sup>5</sup>Final determination of LEAs funded at the LCFF Target is made at the Second Principal (P-2) Apportionment.

### LCFF Target Entitlement Calculation

LCFF Target Components	Number of COEs	Amount
Base Grant Funding	54	\$186,774,796
Supplemental Grant Funding	49	57,556,401
Concentration Grant Funding	49	25,005,453
Alternative Education Grant (subtotal)	n/a	269,336,650
Operations Grant Funding	58	834,320,770
Add-on Funding	56	51,799,752
<b>Total LCFF Target Entitlement</b>	<b>n/a</b>	<b>\$1,155,457,172</b>

### Alternative Education Grant Average Daily Attendance (ADA)

ADA Type	ADA
Non-Juvenile Court School ADA	7,431.80
Juvenile Court School ADA	3,960.13
<b>Total County Funded ADA</b>	<b>11,391.93</b>

### Unduplicated Pupil Percentage (UPP)

UPP Type	UPP
Average UPP (Non-Juvenile Court School)	75.03%
Lowest non-zero UPP (Non-Juvenile Court School)	49.30%

### Additional State Aid

Additional State Aid Component	Number of COEs	Amount
Additional State Aid for Minimum State Aid Guarantee	22	\$151,379,644
State Aid Pursuant to <i>EC</i> Section 2575.1	24	8,947,868
State Aid Pursuant to <i>EC</i> Section 2575.2	58	99,466,669
State Aid Pursuant to <i>EC</i> Section 2575.3	23	10,150,000
<b>Total Additional State Aid</b>	<b>n/a</b>	<b>\$269,944,181</b>