

# Local Control Funding Formula (LCFF) Statewide Fingertip Facts 2023–24 Fiscal Year – Second Principal Apportionment (as of June 2024)

Prepared by: CA Dept. of Education  
School Fiscal Services Division

## 2023–24 AT A GLANCE

### Funding Sources:

- \$47.6 Billion from State General Fund
- \$26.0 Billion from Local Revenue
- \$7.0 Billion from Education Protection Account (EPA)



### Funding Apportioned:

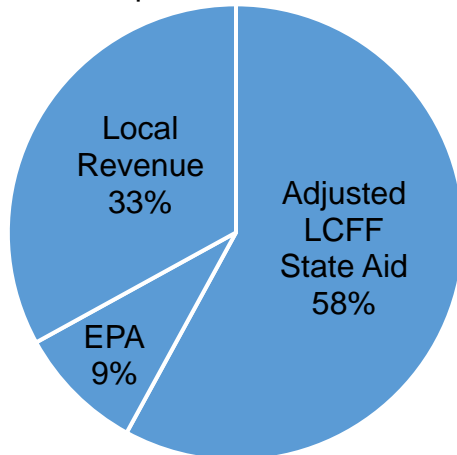
- \$70.0 Billion to School Districts
- \$9.1 Billion to Charter Schools
- \$1.5 Billion to County Offices of Education (COE)

## LCFF Funding Detail

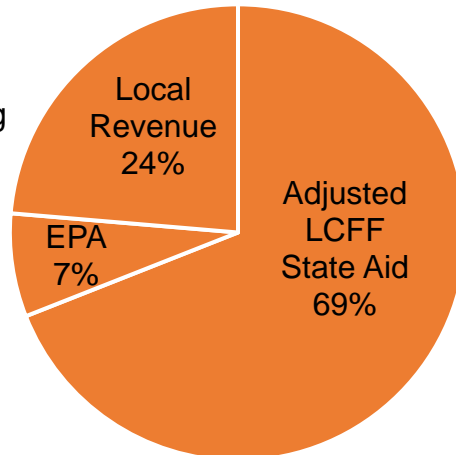
Sources	School Districts	Charter Schools	School District & Charter Subtotal	County Offices of Education	Statewide Total
LCFF State Aid before Minimum State Aid (MSA)	\$40,378,465,278	\$6,262,015,228	\$46,640,480,506	\$454,072,937	<b>\$47,094,553,443</b>
Additional State Aid for MSA Guarantee, Other LCFF State Aid for COEs	197,434,942	320,956	197,755,898	274,976,763	<b>472,732,661</b>
Adjusted LCFF State Aid (subtotal)	40,575,900,220	6,262,336,184	46,838,236,404	729,049,700	<b>47,567,286,104</b>
EPA State Aid	6,329,520,287	664,749,465	6,994,269,752	21,484,547	<b>7,015,754,299</b>
Local Revenue/In-lieu of Property Taxes <sup>1</sup>	23,104,790,543	2,146,299,879	25,251,090,422	721,823,160	<b>25,972,913,582</b>
<b>Total LCFF Funding Sources</b>	<b>\$70,010,211,050</b>	<b>\$9,073,385,528</b>	<b>\$79,083,596,578</b>	<b>\$1,472,357,407</b>	<b>\$80,555,953,985</b>

<sup>1</sup>Amounts in table and pie charts do not include excess local revenue.

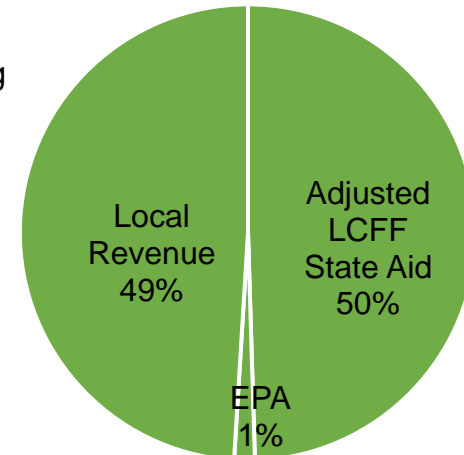
School District Funding



Charter School Funding



COE Funding



## SCHOOL DISTRICT AND CHARTER SCHOOL DATA

### Summary

LCFF Entitlement Component	District Count	% of Districts	District Funding	Charter Count	% of Charters	Charter Funding	Total Count	Total Funding
Base Grant Funding <sup>2</sup>	903	96.3%	\$55,308,220,296	1,262	100.0%	\$7,493,602,578	2,165	\$62,801,822,874
Supplemental Grant Funding	938	100.0%	7,100,435,775	1,261	99.9%	940,305,408	2,199	8,040,741,183
Concentration Grant Funding	575	61.3%	5,454,130,567	787	62.4%	591,521,442	1,362	6,045,652,009
Necessary Small School (NSS) Allowance	110	11.7%	144,495,411	n/a	n/a	n/a	110	144,495,411
Add-on Funding	934	99.6%	1,760,738,388	658	52.1%	47,635,144	1592	1,808,373,532
Miscellaneous Adjustments <sup>3</sup>	6	0.6%	-603,055	0	0.0%	0	6	-603,055
State Aid for MSA Guarantee	152	16.2%	197,434,942	8	0.6%	320,956	160	197,755,898
<b>Total LCFF Entitlement<sup>4</sup></b>	<b>n/a</b>	<b>n/a</b>	<b>\$69,964,852,324</b>	<b>n/a</b>	<b>n/a</b>	<b>\$9,073,385,528</b>	<b>n/a</b>	<b>\$79,038,237,852</b>

<sup>2</sup>Some school districts are fully funded through NSS and do not receive Base Grant Funding; some charter schools have no Base Grant Funding due to zero funded ADA.

<sup>3</sup>Adjustments for special legislation, instructional time penalties, and class size penalties.

<sup>4</sup>Total LCFF Entitlement is less than Total LCFF Funding Sources (shown on page 1) due to EPA State Aid minimum guarantee.

### Ten Largest School Districts (based on Funded ADA)

School District Name	ADA	UPP
Los Angeles Unified	375,224.97	85.65%
San Diego Unified	91,155.73	59.47%
Fresno Unified	64,859.91	88.46%
Long Beach Unified	63,767.93	64.13%
Elk Grove Unified	59,130.88	51.78%
Corona-Norco Unified	49,105.94	69.75%
San Francisco Unified	47,263.12	59.59%
San Bernardino City Unified	43,841.33	91.52%
Capistrano Unified	41,770.68	32.79%
Clovis Unified	40,317.58	48.33%

### Ten Largest Charter Schools (based on Funded ADA)

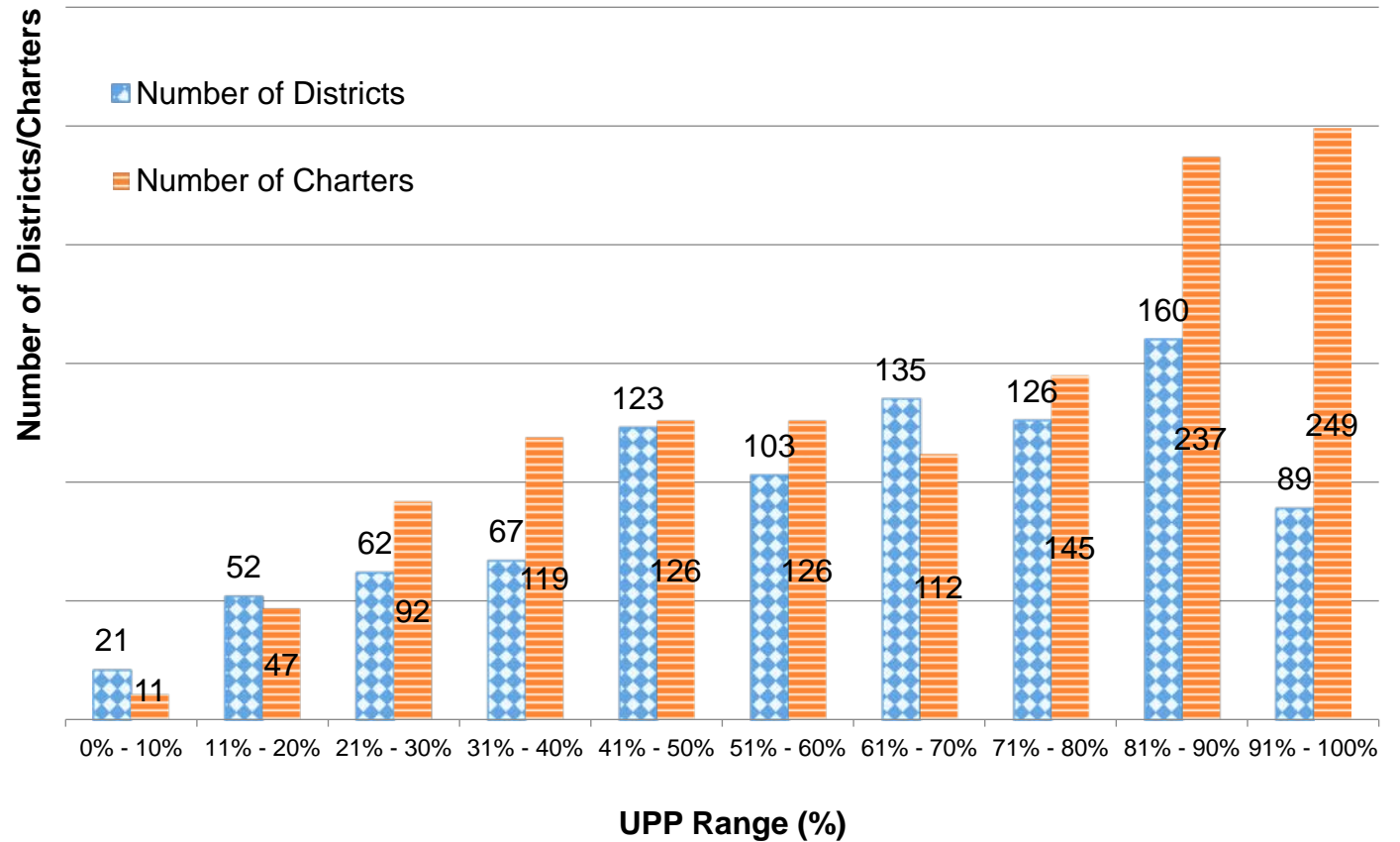
Charter School Name	ADA	UPP
River Springs Charter	7,213.37	58.45%
Blue Ridge Academy	6,853.30	41.69%
Visions In Education	6,747.70	56.03%
Highlands Community Charter	5,923.20	99.04%
Granada Hills Charter	5,701.25	50.74%
Mission Vista Academy	5,650.79	42.61%
Pacific Coast Academy	5,600.30	38.79%
California Virtual Academy @ Los Angeles	5,549.73	75.15%
Heartland Charter	5,531.37	43.87%
California Connections Academy Southern California	4,896.08	52.38%

## Total Funded ADA by Grade Span (includes NSS ADA)

LEA Type	Number of LEAs	Grades TK/K-3	Grades 4-6	Grades 7-8	Grades 9-12	TOTAL ADA
School Districts	938	1,497,861.45	1,131,574.61	761,008.82	1,599,969.85	4,990,414.73
Charter Schools	1,264	185,640.69	138,345.77	109,134.01	238,197.09	671,317.56
<b>TOTAL</b>	<b>2,202</b>	<b>1,683,502.14</b>	<b>1,269,920.38</b>	<b>870,142.83</b>	<b>1,838,166.94</b>	<b>5,661,732.29</b>

## Unduplicated Pupil Percentage (UPP) Ranges for School Districts and Charter Schools

UPP Range	District Count	Charter Count
0% - 10%	21	11
11% - 20%	52	47
21% - 30%	62	92
31% - 40%	67	119
41% - 50%	123	126
51% - 60%	103	126
61% - 70%	135	112
71% - 80%	126	145
81% - 90%	160	237
91% - 100%	89	249
<b>Total</b>	<b>938</b>	<b>1,264</b>



## COUNTY OFFICE OF EDUCATION DATA

### LCFF Funding Summary

LCFF Entitlement	Number of COEs	Amount
Funding Based on LCFF Target <sup>5</sup>	47	\$793,176,519
Funding Based on “Hold Harmless” provisions of <i>EC</i> Section 2575(g)(2)	11	\$403,510,339

<sup>5</sup>Final determination of LEAs funded at the LCFF Target is made at the Second Principal (P-2) Apportionment.

### LCFF Target Entitlement Calculation

LCFF Target Components	Number of COEs	Amount
Base Grant Funding	54	\$177,714,393
Supplemental Grant Funding	49	54,858,488
Concentration Grant Funding	49	23,911,534
Alternative Education Grant (subtotal)	n/a	\$256,484,415
Operations Grant Funding	58	832,401,235
Add-on Funding	56	51,799,752
<b>Total LCFF Target Entitlement</b>	<b>n/a</b>	<b>\$1,140,685,402</b>

### Alternative Education Grant Average Daily Attendance (ADA)

ADA Type	ADA
Non-Juvenile Court School ADA	7,053.36
Juvenile Court School ADA	3,785.95
<b>Total County Funded ADA</b>	<b>10,839.31</b>

### Unduplicated Pupil Percentage (UPP)

UPP Type	UPP
Average UPP (Non-Juvenile Court School)	74.98%
Lowest non-zero UPP (Non-Juvenile Court School)	49.15%

### Additional State Aid

Additional State Aid Component	Number of COEs	Amount
Additional State Aid for Minimum State Aid Guarantee	22	\$156,412,226
State Aid Pursuant to <i>EC</i> Section 2575.1	24	8,947,868
State Aid Pursuant to <i>EC</i> Section 2575.2	58	99,466,669
State Aid Pursuant to <i>EC</i> Section 2575.3	23	10,150,000
<b>Total Additional State Aid</b>	<b>n/a</b>	<b>\$274,976,763</b>