

# Local Control Funding Formula (LCFF) Statewide Fingertip Facts 2023–24 Fiscal Year – Annual Principal Apportionment (as of February 2025)

Prepared by: CA Dept. of Education  
School Fiscal Services Division

## 2023–24 AT A GLANCE

### Funding Sources:

- \$47.1 Billion from State General Fund
- \$26.5 Billion from Local Revenue
- \$7.0 Billion from Education Protection Account (EPA)



**\$80.6  
Billion**



### Funding Apportioned:

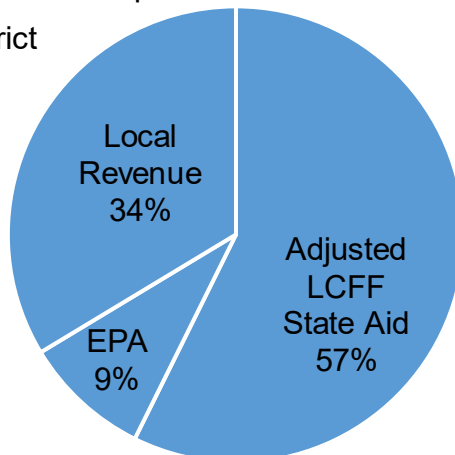
- \$70.0 Billion to School Districts
- \$9.1 Billion to Charter Schools
- \$1.5 Billion to County Offices of Education (COE)

## LCFF Funding Detail

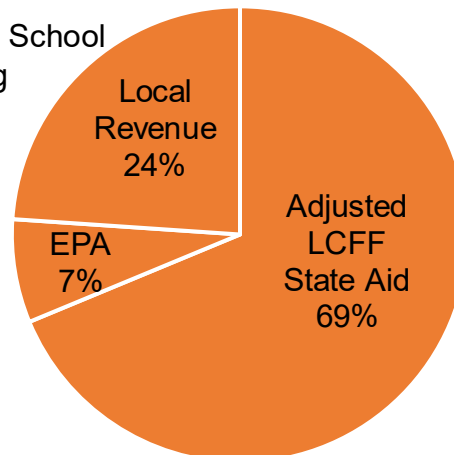
Sources	School Districts	Charter Schools	School District & Charter Subtotal	County Offices of Education	Statewide Total
LCFF State Aid before Minimum State Aid (MSA)	\$39,937,048,517	\$6,230,808,234	\$46,167,856,751	\$446,893,024	<b>\$46,614,749,775</b>
Additional State Aid for MSA Guarantee, Other LCFF State Aid for COEs	197,223,646	321,111	197,544,757	279,823,962	<b>477,368,719</b>
Adjusted LCFF State Aid (subtotal)	40,134,272,163	6,231,129,345	46,365,401,508	726,716,986	<b>47,092,118,494</b>
EPA State Aid	6,329,276,484	664,916,443	6,994,192,927	21,546,360	<b>7,015,739,287</b>
Local Revenue/In-lieu of Property Taxes <sup>1</sup>	23,552,980,007	2,168,586,520	25,721,566,527	728,381,078	<b>26,449,947,605</b>
<b>Total LCFF Funding Sources</b>	<b>\$70,016,528,654</b>	<b>\$9,064,632,308</b>	<b>\$79,081,160,962</b>	<b>\$1,476,644,424</b>	<b>\$80,557,805,386</b>

<sup>1</sup>Amounts in table and pie charts do not include excess local revenue.

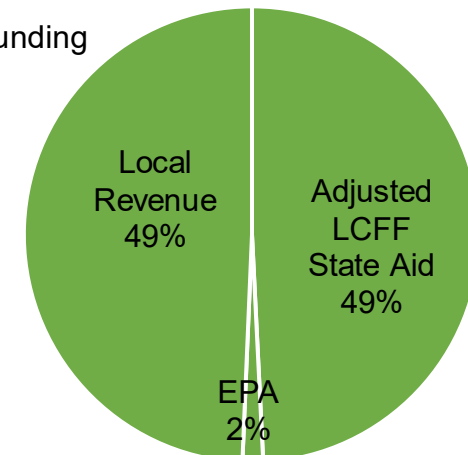
School District Funding



Charter School Funding



COE Funding



## SCHOOL DISTRICT AND CHARTER SCHOOL DATA

### Summary

LCFF Entitlement Component	District Count	% of Districts	District Funding	Charter Count	% of Charters	Charter Funding	Total Count	Total Funding
Base Grant Funding <sup>2</sup>	901	96.1%	\$55,309,008,865	1,262	100.0%	\$7,486,559,011	2,163	\$62,795,567,876
Supplemental Grant Funding	938	100.0%	7,101,103,209	1,261	99.9%	939,470,763	2,199	8,040,573,972
Concentration Grant Funding	574	61.2%	5,454,386,557	787	62.4%	590,809,129	1,361	6,045,195,686
Necessary Small School (NSS) Allowance	112	11.9%	148,501,554	n/a	n/a	n/a	112	148,501,554
Add-on Funding	934	99.6%	1,761,230,568	660	52.3%	47,472,294	1594	1,808,702,862
Miscellaneous Adjustments <sup>3</sup>	5	0.5%	-307,489	0	0.0%	0	5	-307,489
State Aid for MSA Guarantee	154	16.4%	197,223,646	8	0.6%	321,111	162	197,544,757
<b>Total LCFF Entitlement<sup>4</sup></b>	<b>n/a</b>	<b>n/a</b>	<b>\$69,971,146,910</b>	<b>n/a</b>	<b>n/a</b>	<b>\$9,064,632,308</b>	<b>n/a</b>	<b>\$79,035,779,218</b>

<sup>2</sup>Some school districts are fully funded through NSS and do not receive Base Grant Funding; some charter schools have no Base Grant Funding due to zero funded ADA.

<sup>3</sup>Adjustments for special legislation, instructional time penalties, and class size penalties.

<sup>4</sup>Total LCFF Entitlement is less than Total LCFF Funding Sources (shown on page 1) due to EPA State Aid minimum guarantee.

### Ten Largest School Districts (based on Funded ADA)

School District Name	ADA	UPP
Los Angeles Unified	375,348.95	85.65%
San Diego Unified	91,176.19	59.47%
Fresno Unified	64,864.76	88.46%
Long Beach Unified	63,767.00	64.13%
Elk Grove Unified	59,141.41	51.78%
Corona-Norco Unified	49,116.80	69.75%
San Francisco Unified	47,266.49	59.59%
San Bernardino City Unified	43,842.75	91.52%
Capistrano Unified	41,772.77	32.79%
Clovis Unified	40,333.80	48.33%

### Ten Largest Charter Schools (based on Funded ADA)

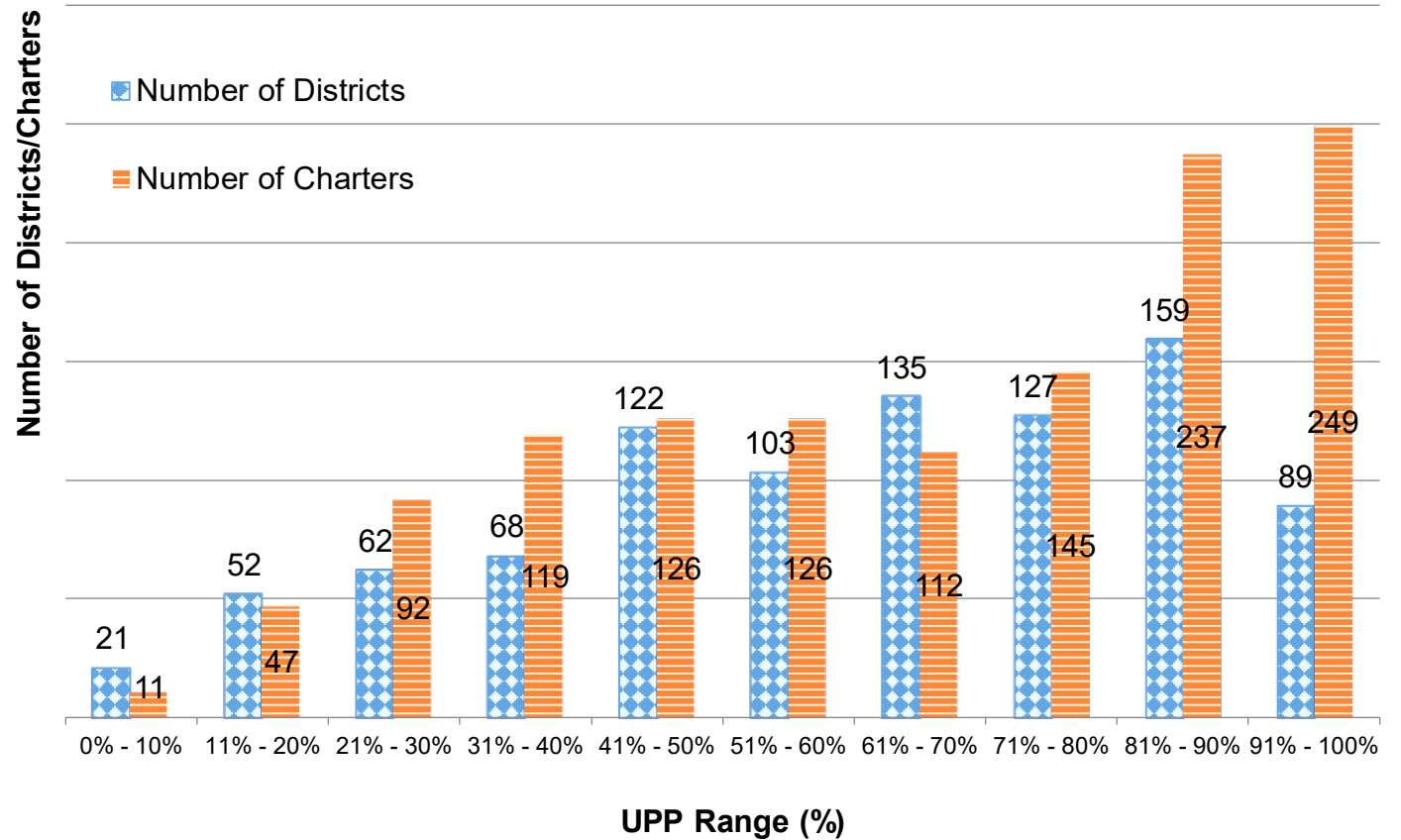
Charter School Name	ADA	UPP
River Springs Charter	7,213.37	58.45%
Blue Ridge Academy	6,853.30	41.69%
Visions In Education	6,748.46	56.03%
Highlands Community Charter	5,736.23	99.04%
Granada Hills Charter	5,694.68	50.74%
Mission Vista Academy	5,650.82	42.61%
Pacific Coast Academy	5,600.42	38.79%
California Virtual Academy @ Los Angeles	5,557.81	75.15%
Heartland Charter	5,531.37	43.87%
California Connections Academy Southern California	4,896.22	52.38%

## Total Funded ADA by Grade Span (includes NSS ADA)

LEA Type	Number of LEAs	Grades TK/K-3	Grades 4-6	Grades 7-8	Grades 9-12	TOTAL ADA
<b>School Districts</b>	938	1,498,304.71	1,131,593.96	761,172.31	1,599,736.11	4,990,807.09
<b>Charter Schools</b>	1,264	185,432.37	138,223.57	109,069.11	237,965.16	670,690.21
<b>TOTAL</b>	<b>2,202</b>	<b>1,683,737.08</b>	<b>1,269,817.53</b>	<b>870,241.42</b>	<b>1,837,701.27</b>	<b>5,661,497.30</b>

## Unduplicated Pupil Percentage (UPP) Ranges for School Districts and Charter Schools

UPP Range	District Count	Charter Count
0% - 10%	21	11
11% - 20%	52	47
21% - 30%	62	92
31% - 40%	68	119
41% - 50%	122	126
51% - 60%	103	126
61% - 70%	135	112
71% - 80%	127	145
81% - 90%	159	237
91% - 100%	89	249
<b>Total</b>	<b>938</b>	<b>1,264</b>



## COUNTY OFFICE OF EDUCATION DATA

### LCFF Funding Summary

LCFF Entitlement	Number of COEs	Amount
Funding Based on LCFF Target <sup>5</sup>	47	\$792,650,628
Funding Based on “Hold Harmless” provisions of <i>EC</i> Section 2575(g)(2)	11	\$403,471,386

<sup>5</sup>Final determination of LEAs funded at the LCFF Target is made at the Second Principal (P-2) Apportionment.

### LCFF Target Entitlement Calculation

LCFF Target Components	Number of COEs	Amount
Base Grant Funding	53	\$177,814,240
Supplemental Grant Funding	49	54,869,694
Concentration Grant Funding	49	23,918,041
Alternative Education Grant (subtotal)	n/a	\$256,601,975
Operations Grant Funding	58	831,463,733
Add-on Funding	56	51,599,752
<b>Total LCFF Target Entitlement</b>	<b>n/a</b>	<b>\$1,139,665,460</b>

### Alternative Education Grant Average Daily Attendance (ADA)

ADA Type	ADA
Non-Juvenile Court School ADA	7,057.23
Juvenile Court School ADA	3,788.17
<b>Total County Funded ADA</b>	<b>10,845.40</b>

### Unduplicated Pupil Percentage (UPP)

UPP Type	UPP
Average UPP (Non-Juvenile Court School)	76.45%
Lowest non-zero UPP (Non-Juvenile Court School)	49.15%

### Additional State Aid

Additional State Aid Component	Number of COEs	Amount
Additional State Aid for Minimum State Aid Guarantee	23	\$161,259,425
State Aid Pursuant to <i>EC</i> Section 2575.1	24	8,947,868
State Aid Pursuant to <i>EC</i> Section 2575.2	58	99,466,669
State Aid Pursuant to <i>EC</i> Section 2575.3	23	10,150,000
<b>Total Additional State Aid</b>	<b>n/a</b>	<b>\$279,823,962</b>